

CLAROFLEX® PIVOT, FRAMELESS RETRACTABLE GLASS WALL



ADVANTAGES OF THE SYSTEM:

1

BOTTOM WEIGHTED SYSTEM.

The weight of the system is evenly distributed on the bottom track, which ensures a high stability and safety without limiting the use of materials such as wood, metal or concrete in the opening.

4

DESIGN SOFTWARE: APPFLEX.

The design software provides all necessary specifications for the machining of the profiles and the glass dimensions for a specific project, as well as determining all required components for its manufacturing and installation.

2

EUROPEAN QUALITY.

The aluminium profiles and system components are manufactured in Europe from high-quality materials and have passed the most demanding endurance tests.

5

GLASS WITHOUT DRILLINGS.

For the production of the system, tempered and/or laminated glass is used without special notches or drill holes for fittings.

3

WITHOUT BEARINGS.

The system is extremely reliable and durable, as the panels slide on a special low-friction surface that requires almost no maintenance.

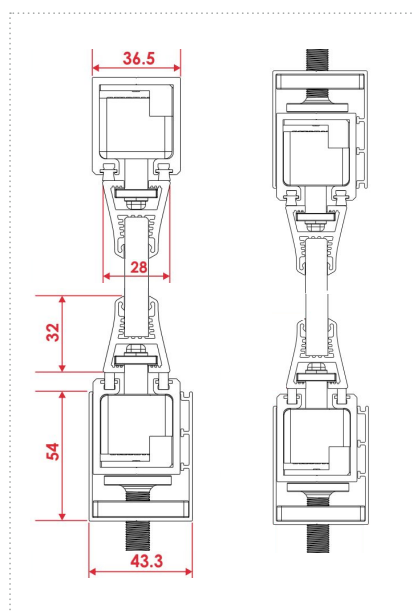
6

BEST WARRANTY OFFERED.

5-year warranty on aluminium profiles and system components, with technical support from the company's experts and, if necessary, the replacement of the required components for the proper functioning of the system.

TECHNICAL DETAILS OF THE SYSTEM:

- Wind load: Class 6.
- Acoustic insulation: 34 dB.
- Thermal insulation: 5.6 W/m²K.
- Airtightness: Class 2.
- Tests: UNE 12600 (2003), 1C1.
- Maximum system height: 3200 mm.



ALUMINIUM PROFILES

The aluminium profiles of the system are made of a high quality aluminium alloy: T-6063. The system bars have an optimum length of **6.3 m**.

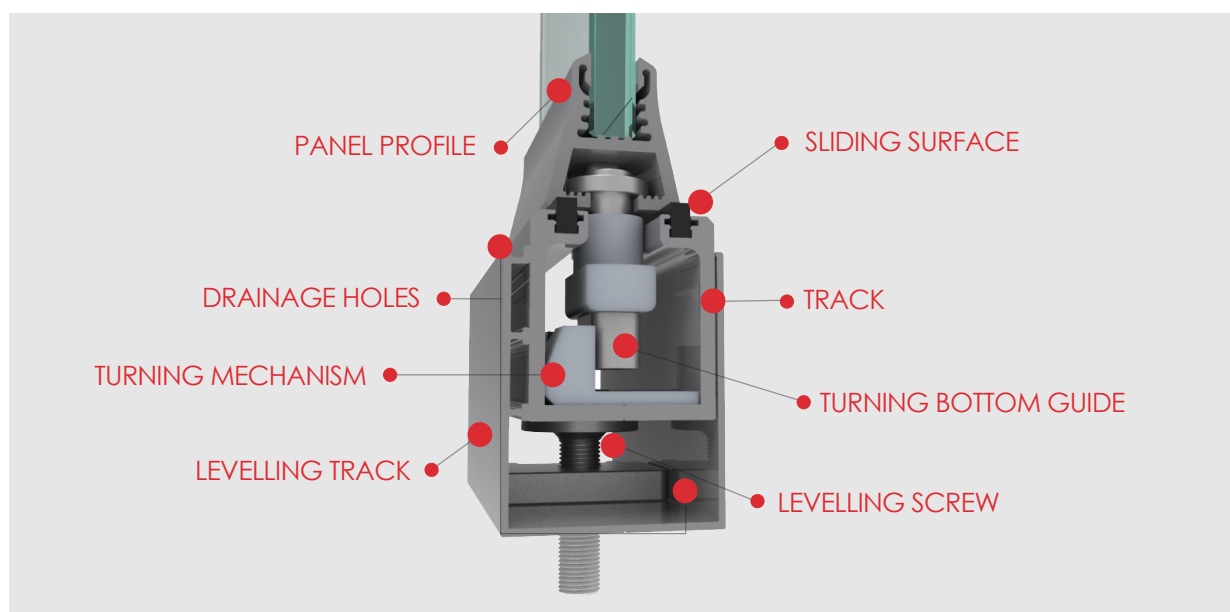
The system includes a symmetrical track and panel profile. This helps optimising the production process to the maximum by minimising profile wastage.

LEVELLING TRACK

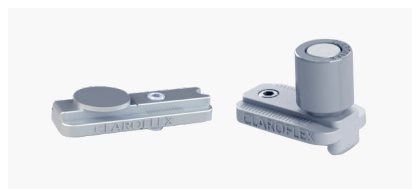
By using only the bottom levelling track with screws, the installation can be adjusted in **34 mm** by modifying the track height. When using top and bottom levelling tracks with screws, it is possible to adjust up to **68 mm** of unevenness, reducing installation and adjustment time of the system.

FULL LENGTH BARS

The full-length bars format is supplied in kits with an optimal ratio for panels and door components, as well as all the rest of items required to manufacture the system (including activator and adhesive).

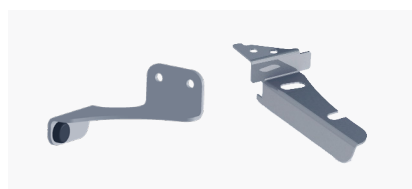


SYSTEM COMPONENTS:



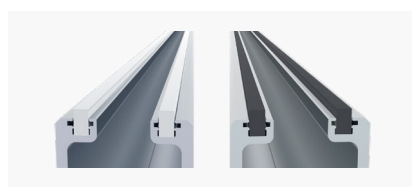
SYSTEM COMPONENTS AND FITTINGS FOR DOORS AND PANELS

The turning guides, guides and door axes are made of high-strength ZAMAK alloy and polyamide, ensuring reliable and quiet movement of the panels.



SYSTEM SUPPORT COMPONENTS

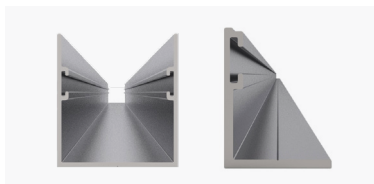
The arms, stoppers, locks and fixing screws are made of stainless steel, which ensures the durability and operation of the system in all climatic conditions.



SLIDING SURFACE

Made of a low friction coefficient polythene, it is placed in the bottom track of the system and ensures the sliding of the panels along the glazing.

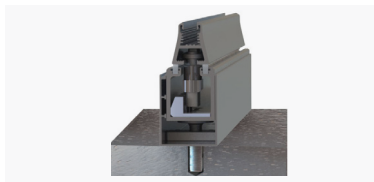
SYSTEM SIDE FINISHES:



SIDE PROFILES

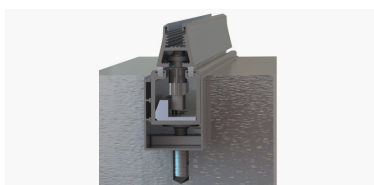
Special plastic sealing strips are used on the sides of the opening, which can be replaced by vertical aluminium «L» and «U» profiles.

SYSTEM FLOOR FINISHES:



FLOOR-MOUNTED SYSTEM

The 54 mm high bottom profiles, consisting of the track and the levelling track with screws, are installed on the finished floor. This configuration is suitable for balconies and terraces, as well as openings that are not designed for frequent passage.



EMBEDDED SYSTEM

The 54 mm high bottom profiles, consisting of the track and the levelling track with screws, are embedded in a previously adapted recess in the floor. This configuration is suitable for all structures with frequent passage.

CUSTOMISATION OF THE SYSTEM:

GLASS

8, 10 and 12 mm thick tempered or laminated glass without drill holes:

- solar control glass,
- etched glass,
- tinted glass by the application of a solar protection or reflective film.

SYSTEM COLOUR

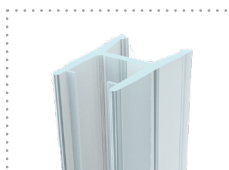
- RAL,
- anodised.

COLOURS FOR OTHER SYSTEM COMPONENTS

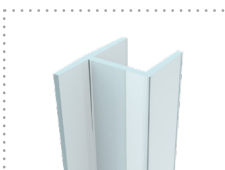
- grey or black brush,
- grey, black or white sliding surface.



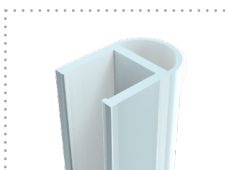
SYSTEM SEALING STRIPS:



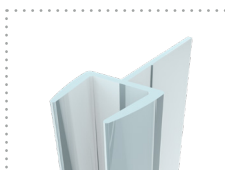
«H» Shaped Strip



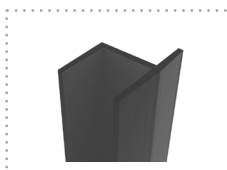
«h» Shaped Strip



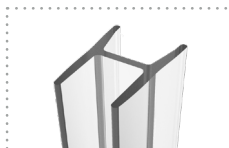
Bubble Strip



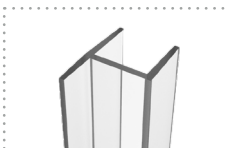
Junta flexible



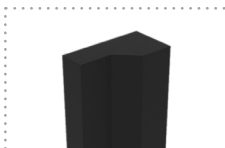
«h» Shaped Strip black



«H» Shaped Strip ULTRA CLEAR



«h» Shaped Strip ULTRA CLEAR



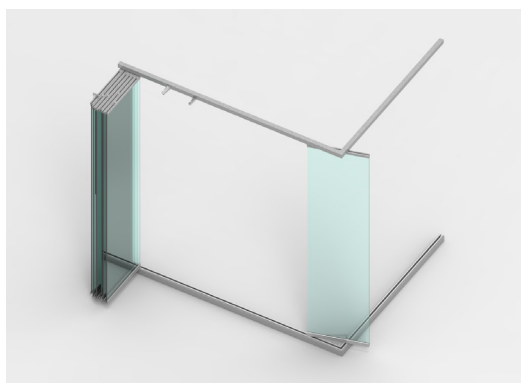
Magnetic strip



«D» shaped strip



Open «D» shaped strip



SYSTEM PANELS

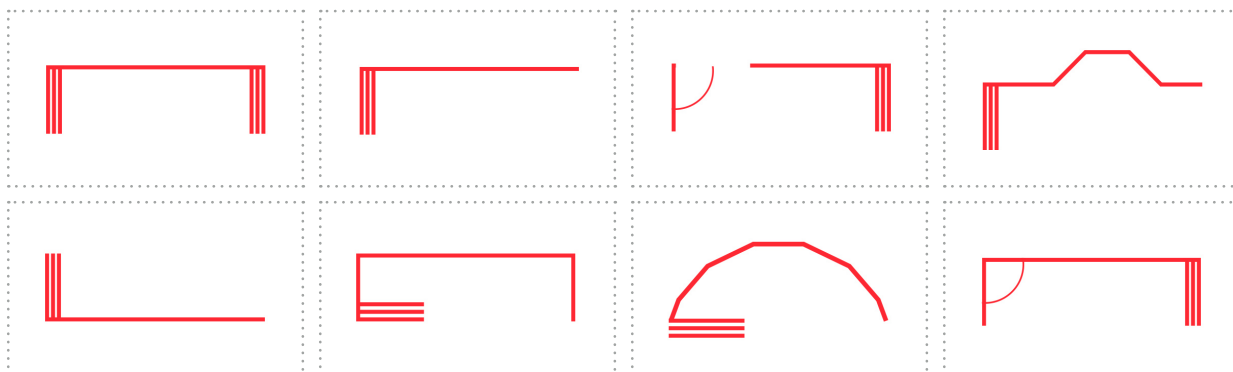
The door width is fully customisable.

The standard panel width varies between **350 mm** to **800 mm**.

Maximum number of panels per opening: **18**.

The panels can glide to their opening position on the right, left or both sides of the system, with the option of opening the panels inwards or outwards. Also, door opening in both directions is possible with the use of the hydraulic hinge.

The panels can move through angles from **90°** to **270°**, as well as moving through circular structures with different angles.



SYSTEM DOORS

The door width is fully customisable.

The standard door width ranges from **800** to **1000 mm**.

Doors can be fitted on one or both sides of the installation.

The standard system includes top and bottom locks as standard. In addition, the top lock offers a ventilation position to prevent condensation.

As an extra, we offer a wide range of security key locks.

ADDITIONAL SYSTEM CONFIGURATIONS:



Side Lock 180°



Sliding Door



Armless System

RECOMMENDATIONS FOR THE USE OF THE SYSTEM:

PRIVATE INSTALLATIONS:

- Outdoor use: pergolas, balconies, terraces, porches, entrances, barbecues.
- Indoor use: Interior partitions.

COMMERCIAL INSTALLATIONS AND HOSPITALITY ESTABLISHMENTS:

- Outdoor use: cafés, restaurants, shops.
- Indoor use: inside partitions, office partitions.



📍 Jose Calderon st, lot #350, P.O. box N.30, 29590, Malaga, Spain.

✉ info@claroflex.com

🌐 www.claroflex.com

☎ +34 952 42 71 41